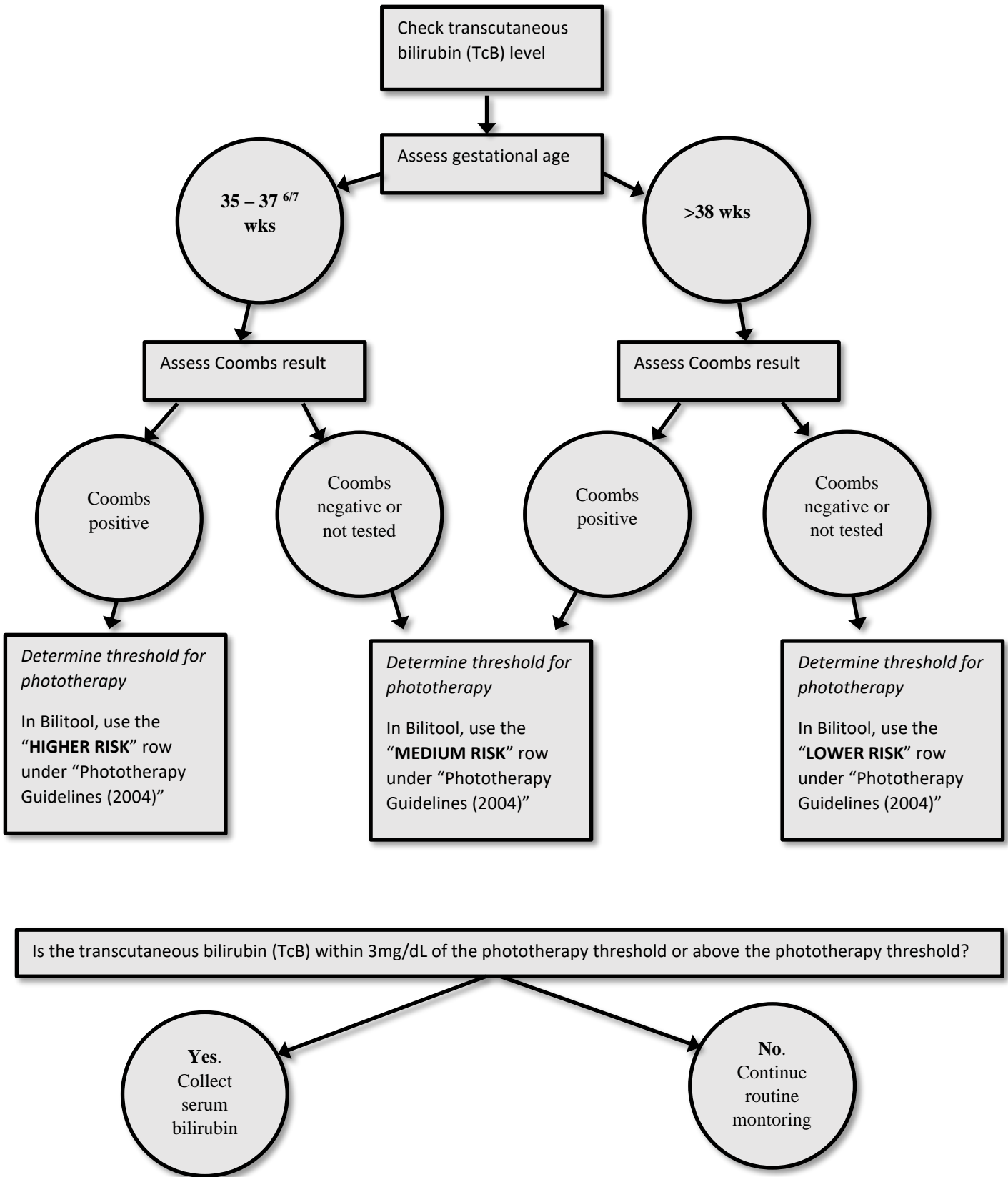


Jaundice screening algorithm – WPH Newborn Nursery



Assessment of total serum bilirubin (TsB)

Is the total serum bilirubin (TsB) within 3mg/dL of the phototherapy threshold or above the phototherapy threshold?

See guidance on page 1 of this document to determine baby's phototherapy threshold.



References:

Taylor JA, Burgos AE, Flaherman V, et al. Utility of Decision Rules for Transcutaneous Bilirubin Measurements. *Pediatrics*. 2016;137(5)

Kuzniewicz MW, Park J, Niki H, et al. Predicting the Need for Phototherapy After Discharge. *Pediatrics*. 2021; 147(5)

